



MONTHLY MEMBERSHIP PROGRESS REPORT

District 26 M4

Results as of: 06/30/2018

GMT: JOE AL PICONE

LOCATION MISSOURI

GMT CA

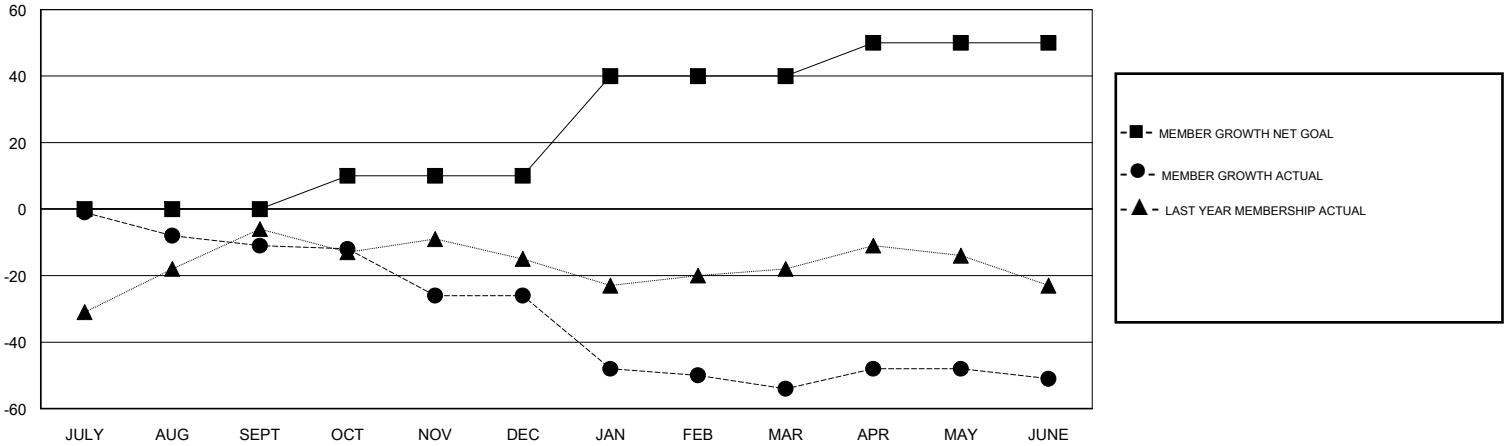
Clubs			
RESULTS FOR 2017-2018			
QUARTER	NEW CLUB GOAL	NEW CLUBS	DROPPED CLUBS
JULY/AUG/SEPT	0	0	0
OCT/NOV/DEC	0	0	0
JAN/FEB/MAR	1	0	0
APR/MAY/JUNE	0	0	1

Members			
RESULTS FOR 2017-2018			
QUARTER	MEMBER GROWTH NET GOAL	MEMBER GROWTH ACTUAL	DROPPED MEMBERS ACTUAL (including transfers)
JULY/AUG/SEPT	0	28	35
OCT/NOV/DEC	10	27	40
JAN/FEB/MAR	30	25	48
APR/MAY/JUNE	10	37	33

GOALS AND ACTUAL NEW CLUBS CUMULATIVE



GOALS AND ACTUAL MEMBERS CUMULATIVE



DROPPED CLUBS: 1	36 CLUBS OF 58 ADDED 1 OR MORE NEW MEMBERS	<u>GENDER DISTRIBUTION</u>		
		MALE	955 (74.55%)	
		FEMALE	326 (25.45%)	
		Women Percentage Fiscal Year Goal: 24%		
<u>DROPPED MEMBERS</u>		TOTAL FAMILY UNIT MEMBERS	0	
DECEASED	13	CLICK HERE FOR CUMULATIVE MEMBERSHIP DATA	FAMILY MEMBERS PAYING HALF DUES	0
CLUB CANCELLED	7			
OTHER	136			
TOTAL	156			